

# President/Advisor Kick-off Meeting

---

Fall 2009

Dean Dana Bekurs  
Dean Roquee Forson  
Dean Tucker Sappington



# A little about Dana Bekurs

USL graduated 1993

Panhellenic two years

Chapter President

SOS 3 years

VP Blue Key Honor Society

Greek Judicial Board

Admissions Counselor

National Volunteer Experience

Chapter consultant

National Extension Team

Recruitment Resource Chair for Southeast

Panhellenic Specialist for Southeast

Grad School Mississippi State University

Valdosta State University (GA)

Jacksonville University (FL)

University of New Orleans

Birmingham-Southern University (AL)

Valdosta State University

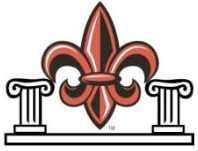
Greek Advisor for 21 national orgs

Worked with all 9 NPHC orgs



# Gavin and Sadie





---

# **TAKE OUR GREEK SYSTEM TO A NEW LEVEL!!!**

Alpha Phi Alpha

Kappa Delta

Alpha Omicron Pi

Pi Kappa Alpha

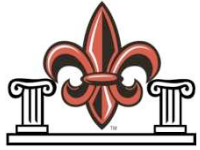
Kappa Sigma

Theta Xi



# Health Update

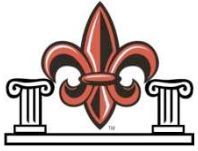
- Currently several universities with H1N1.
- This academic year there will be multiple cases around the country in schools.
- UL information <http://safety.louisiana.edu/>
- Read over flier to chapter and post.
- Hand sanitizer in meetings and gatherings.



# Website

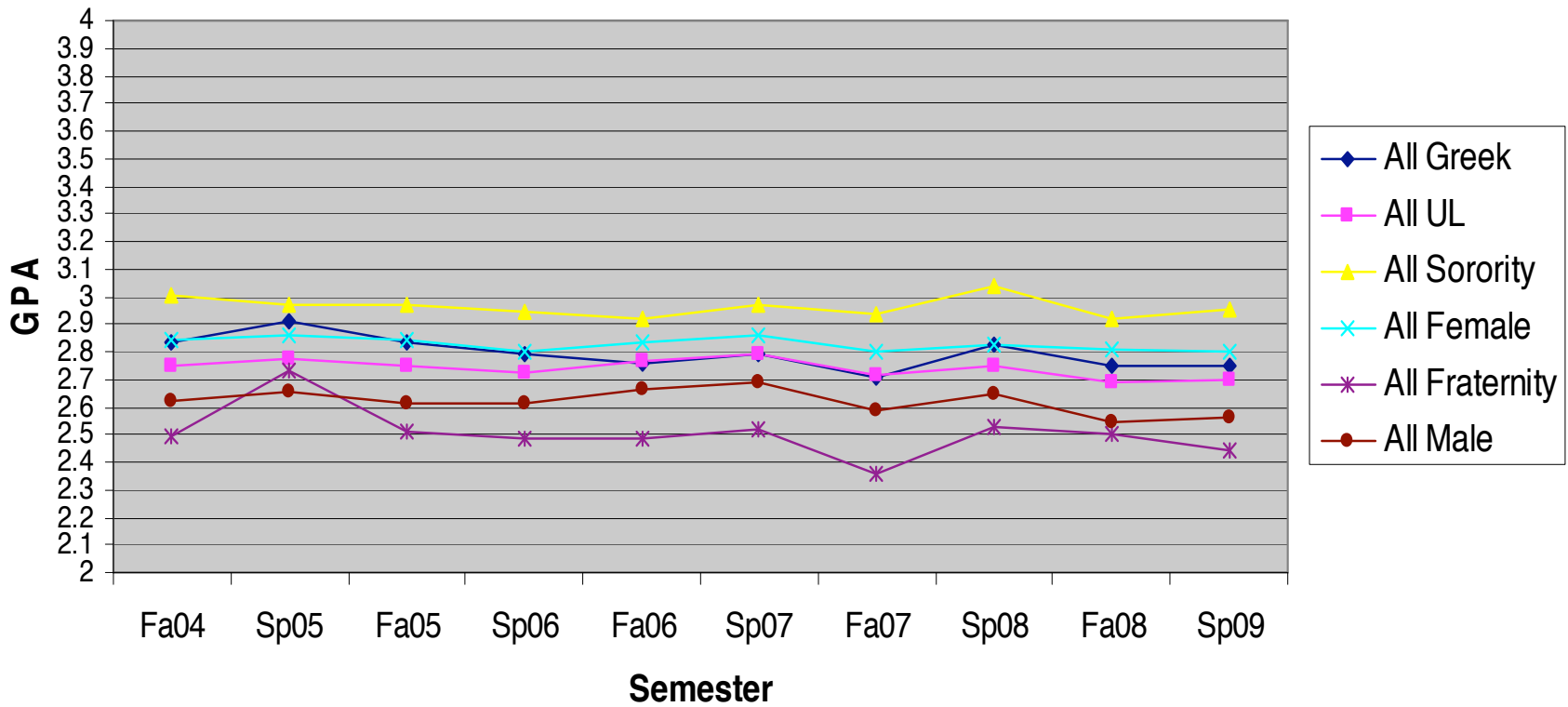
---

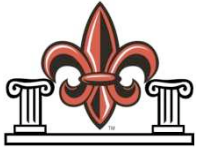
- Picture of the Week
- Resources and Forms
- Chapter Profiles
  - Updates sent to [greek@louisiana.edu](mailto:greek@louisiana.edu)
  - Advisor, President, Recruitment/Intake email
- Awards and Grades
- Calendar
- <http://ulgreeks.com>



# Grade Update

## Greek Grades



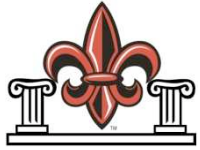


# Grade Awards

- Academic Excellence for Chapters-- Above the All Women's or All Men's Average Spring 09

Sororities > 2.7979
AKA Chapter 3.4906
KΔ Chapter 3.2175
ΔΔΔ Chapter 3.0790
ΦM Chapter 2.9149
ΑΟΠ Chapter 2.8461
ΣΣΣ Chapter 2.8110

Fraternities > 2.5599
ΠΚΑ Chapter 2.6947
ΚΣ Chapter 2.6295
ΚΑ Chapter 2.5881



# Below AWA and AMA

- Spring 09

Sororities < 2.7979 (AWA)
AKA New Members 2.7917
ZΦB New Members 2.7308
ΔΣΘ Chapter 2.6983
ΣΓΡ Chapter 2.6697
ΣΣΣ New Members 2.5768
ΑΟΠ New Members 2.5690
ZΦB Chapter 2.1538

Fraternities < 2.5599 (AMA)	<b>DWB</b>
ΩΨΦ Chapter 2.5106	
ΑΦΑ Chapter 2.4751	
ΦΒΣ Chapter 2.4746	
ΘΞ Chapter 2.4710	
ΦΚΘ Chapter 2.4469	
ΠΚΑ New Member 2.4188	
ΛΧΑ Chapter 2.4000	
ΣΑΕ Chapter 2.3671	
ΚΑΨ Chapter 2.3000	
ΑΦΑ New Member 2.2737	
ΣΑΕ New Member 2.0169	
ΚΑΨ New Member 1.9628	
ΘΞ New Member 1.750	
ΛΧΑ New Member 1.6429	
ΚΣ New Members 1.3913	

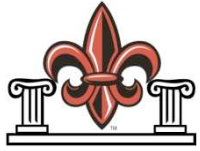


# Grade Awards

- Academic Excellence for Members
  - All members with above 3.5 Semester GPA

ΑΚΑ	5
ΔΣΘ	3
ΣΓΡ	1
ΑΟΠ	18
ΔΔΔ	28
ΚΔ	42
ΦΜ	20
ΣΣΣ	11

ΑΦΑ	1
ΚΑΨ	1
ΦΒΣ	1
ΚΑ	4
ΚΣ	12
ΠΚΑ	15
ΦΚΘ	3
ΘΞ	3



# Grade Discussion

---

- Dip in grades from Sp08 to Sp09
  - Individual Incentives and Consequences (chapter responsibility)
  - Group Incentives and Consequences (University responsibility)
- Mid-term grades
- Develop new policies



# Roster Updates and Electronic Info Sheets

---

- Both Due Sept 21 with \$5 per day late fine
- You should have received a copy of the blank info sheet from Dean Sappington
- It **MUST** be completed. No blanks on info sheet left or it does not count
- Email back to [greek@louisiana.edu](mailto:greek@louisiana.edu)



# Goal Setting

---

- Goal Setting must be done by Sept 21 for all first time Presidents
- Advisors must be present
- Set up a time with Dean Forson or Dean Sappington to meet
- Event forms will not be approved without a goal setting meeting



# Dues

---

- Dues will be due on Sept 21 with \$5 per day late fine
  - Make checks out to your council
    - PC                   \$100 + \$2.50 per member
    - IFC                  \$100 + \$3 per member
    - NPHC               \$100 + \$2.50 per member
  - This 1 check includes semester dues to Greek Council. Add on any fines due to the office
  - Motion this fall to increase membership dues.



## Events

---

- Alcohol forms will still be signed and turned in to the office.
- Security Forms will still be turned in to UP
- Temporary Structure forms still need to be turned in.
- Paperwork for facility reservations will still need to be turned in to appropriate offices.
- Protocol for calling Dean Sappington, Dean Forson, Kristan Leger, and Dean Bekurs.



# Events

---

- All forms on website. Use forms until EMS takes affect.
- DO NOT promote events before approval. All events MUST be registered!
- If two or more organizations sponsoring event all need to register event.
- Master calendar on EMS. Use when planning dates of events.
- Collaborate on events with groups that have similar interests.



# Events

- New Event Management Software begins Fall 2009 through Union.
- Training will be on Sept 23 for all presidents and faculty advisor (chapter advisors are invited to attend).
- Continue to use Club Manager until that date. Student Organization Management Software [www.louisiana.netclubmgr.com](http://www.louisiana.netclubmgr.com)
- Alcohol Workshop
- Non registered events at bars



# New Member Information

---

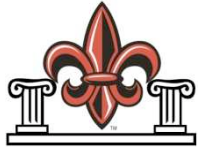
- No longer an anti-hazing card – new member contract. Contract is between member and organization/University on grades, anti-hazing, financial responsibilities, and discipline matters.  
<http://ulgreeks.com/>
- New member orientation Oct 16<sup>th</sup>. All new members from all councils. Spring 2009 through present.



# Hold on Student Account

---

- We offer the option of placing a hold on non-paying member's student account. This keeps them from scheduling classes obtaining transcripts, and graduating.
- You must provide documentation to Greek Affairs Office before accounts are placed on hold.
- The paperwork in your folder has more information about the guidelines for blocking.
- <http://ulgreeks.com/>



# Greek Guide Fee

---

- Each semester, a \$5 fee is added to every member's student account listed on a roster.
- Please let your members know about it so they are not surprised
- Greek Guide fee is used for all marketing for Greek Life.
- Your responsibility to get information in.



# Council Meetings Mondays

- Start on August 31
  - Greek Council 3pm Forum – same delegate
    - Election for officers and committee heads, **VOTE** that day
    - Pres, VP, Treasurer, Sect, Community Service, Greek Week, Greek Relations, Greek Guide
  - Panhellenic Council 4pm Derrick Room
    - Junior Panhellenic 3 pm Teche room Sept 14
  - IFC 4pm Acadian Room
  - NPHC 5pm Bastille Room
- Review of all council constitution and bylaws this fall.



# Greek Class

---

- Greek Development CNED 125
- Wednesdays 4- 4:50 FGM 216
- First class Sept 2.
- Students must be present that day to register.
- All organizations are asked to send representation.



# Excellence Standards

---

- Due on February 12, 2010 at noon with a 5 point per day deduction if late. None will be accepted after February 19.
- Please contact Dean Forson or Sappington if you have questions about filling it out.
- Awards on March 31 at Alumni Center at 6pm
- <http://ulgreeks.com/>
- Excellence Chairperson



# Rho Lambda

---

- Applications are available on website
- Due: Friday, September 18th
- First 40 that are eligible with the fee will be accepted
- Initiation on Thursday Nov 5 at 3pm in Bastille Room



# Tipsy Taxi

- Tipsy Taxi is a program from the Lafayette Sherriff's Office to prevent drunk driving.
- A free ride home is offered to any one that requests it.
- A taxi is called and a voucher is given by the bartender to serve as payment.
- Vouchers can be requested for private parties.  
Contact the Sherriff's Office for more information:  
Lafayette Parish Sheriff's Office  
(337) 236-5657 ext. 31



# Chapter Mailboxes

---

- About once a week check your mailboxes. Appoint another member to handle it if you will not be available.
  - Greek Affairs will put things in your chapter mailbox outside of Dean Sappington's office.
  - Outside organizations (UPC, Campus Clean-up, etc.) will put things in mailboxes in Guillory Hall.



# Email Address

- We will email you often. You will be held accountable for the information sent by email.
- Keep up with your UL account (if you give it to us as your contact) or it will fill up quickly. Empty the inbox, sent folder, and trash folder regularly.
- Have it forwarded to another account with more storage <http://helpdesk.louisiana.edu/> and select 'Forward email' from the menu.
- Secondary account just tell us.



# T-shirt Themes

---

- Please remember to represent your organization in a positive manner on printed items
- Turn in designs for approval **BEFORE** printing
- Any t-shirt printed without an approved design is subject to being taken away
- T-shirt with UL logo must be approved

**TAS**



# Staff Assistant

---

- We are looking for another Staff Assistant!
- Applicants need to be willing to disaffiliate from his or her chapter
- Needs to work approximately 20 hours a week
- Application on website.



# Greek Seekers

---

- Enrollment Services will invite us to help with events for UL promotion.
- Greeks go back to their own high school. Only two per event.
- You will receive an email with pre-planned events. RSVP with Dean Forson.



# Krewe of Roux

---

- Packets are available in UPC Office and are due January 29 before 4pm
- King/Queen Selection February 4
- King Cake Give-a-way February 11
- Parade will be Saturday February 14 at 3pm followed by Women's (5pm) and Men's Basketball (7pm) at the Cajundome



# Tobacco Speaker

---

- Victor DeNoble, former researcher for Philip Morris.
- He played a key role in exposing the big tobacco corporations claim that cigarettes weren't addictive.
- February 5, 2008 6-8 Union Ballroom
- 30% of chapter needs to be present
- Can be used for education points



# Preview Day

---

- Oct 10 and Nov 21 at 8am in the Ballroom
- Sign up with Enrollment Services for a table.
- Bring a brag board and decorate your table



# Announcements

---

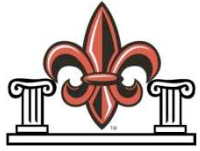
- Tailgating
- Put letters below the fence at the stadium.  
Fence will be up next Wednesday
- Student Affairs touring the row. Sept 9 and 17<sup>th</sup>



# Greek Week

---

- March 23-27
- Greek Council is organizing
  - Veronika Citizen of ZFB is chairing
- Look for packets with more information from your delegate by mid-February



# Break-out Rooms

---

- Evangeline - IFC
- Bastille - Panhellenic
- Derrick - NPHC
  
- THANKS FOR COMING!
- Evaluations on survey monkey soon.
- HAVE A GREAT SEMESTER!